



## COMPANY PORTFOLIO

2023

**JTS** Johnson  
Technical  
Services

Bill Johnson Technical Services LLC  
80-88 18th St -Al Quoz - Dubai,UAE  
Tel: 971-43935904 [www.jts-me.com](http://www.jts-me.com)





## COMPANY PROFILE

Johnson Technical Services is a Dubai based Electrical Contracting firm specializing in the installation and integration of lighting and lighting control systems to the Theme Park, Exhibit, F&B and Retail markets.

JTS was founded in 2008 and is affiliated with Los Angeles based CD+M Lighting Design Group.

We're unique in that we pair our lighting design acumen with highly skilled installers and site supervisors to provide a full range of solutions in creating vibrant, exciting, energy efficient lighting installations.

From simple technology and technique upgrades that improve merchandising to complex media façade solutions we address a broad spectrum of lighting requirements.

We design, deliver and install turnkey systems and interfaces that are simple to manage and operate and properly

## CLIENT LIST





SERVICES

Electrical Installation

JTS provides a wide range of services across the Residential, Commercial and Industrial industries. Whether you are renovating your workplace, replacing a light socket, installing video surveillance equipment, or remodeling your home, JTS's team of experienced, licensed electricians have the skill and expertise to complete your project. Our base contracting services include the following:

- Power Distribution
- Lighting Systems
- Ballast and lamp replacement
- Energy Management Systems
- Site & Parking Lot Lighting
- Security Lighting
- Maintenance Contracts
- Fire and Security Systems
- Lighting Control Systems
- Design Build Services
- Service Upgrades
- Facility Inspection

Sustainability & Retrofits

Lighting can account for up to 40% of a facilities electrical demand. Increase efficiency, decrease heat emissions, environmental benefits and saving money are a few of the benefits of upgrading to an energy saving lighting option.

LED's have transformed and revolutionized the lighting industry, the last three years in particular. Front-trending traditional lamp sources three years ago such as CFL's have literally disappeared with no lamp technology able to hide, even decorative filament lamps are gone forever.

The challenge faced by designers and facilities managers, however, is the broad spectrum of quality and proliferation of LED manufacturers within the industry. Saving energy can be straight forward enough but maintaining a high visual aesthetic in a five star hotel with LED's can be very difficult.

Our unique affiliation with award winning CD+M Lighting Design Group means that we approach our retrofit projects the same way CD+M designers do with high attention to CRI, shadow play, brightness, dimming compatibility, glare, and distribution. This ensures your projects are not only energy efficient but also visually stunning.

Lighting & System Integration

JTS provides technical design, consulting and management of show systems (including audio, video, projection, show control, lighting, special effects and mechanical systems) for theme park attractions and other entertainment venues. We take our direction from the needs of the show design, and we are experts at gently deriving the needs from the creative team and owner's staff. Put us on the team, and see what we can do!

Our experience spans both indoor and outdoor theme parks, attractions, theaters, exhibits and dark rides. We utilize our skills and knowledge to integrate technology into the very fabric of the attraction and are known in the industry to be flexible and professional in our design and fabrication process.

We manage the build vendors through their fabrication and installation phase keeping a keen eye on site progress and activities to ensure the seamless installation of equipment. We program shows and provide management of technical vendors and coordinate the activities to support the creative efforts of the artistic team members.

- Specialty show technologies we provide include:
- Water Effects, Waterfalls and Water Play
  - Misting and Fog Systems
  - Low Smoke and Fog Systems
  - Fog & Smoke "Blasts" or Rolling Clouds
  - Wind Effects
  - Scent and Smell Effects
  - Lightning and Tesla Coil
  - Special Effects and Show Lighting Systems

Maintanance

JTS offers both consulting and maintenance programs to ensure your lighting systems are managed and maintained properly which is a largely misunderstood practice in the UAE. Group re-lamping, proper cleaning, focus & aim of equipment, diming interface and programming are all elements of well maintained lighting systems all of which must work cohesively to create a Vibrant Space





## ONGOING PROJECTS

1. Lighting Installation at Qasar Al Sarab
2. Facade Lighting Installation Works at Mashreq Bank
3. Facade Lighting Installation Works at DMCC Uptown
4. Facade Lighting Installation Works at PALM TOWER
5. Chandelier Lighting works at Qaryat Island
6. Lighting Installation Works at Wathba Palace
7. Lighting Control System works at Zayed National Museum
8. Electrical works At Palm Jumeirah J20 Villa
9. Façade Lighting Installation Works at Al Wasl tower 2020
10. Façade Lighting Installation works at One Zabeel Dubai
11. Lighting control POE Integration system installation works at DEWA HQ



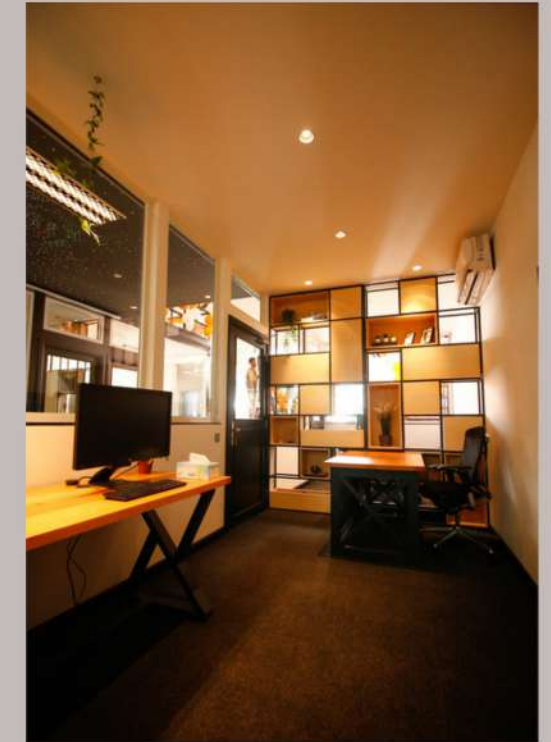
## PROJECTS EXECUTED

1. MEP Contractor BD30 Private Musalla Level 160 – Burj Khalifa, 2012 – Emaar
2. Lighting Installation Works at Burj Khalifa – Observation Desk, Dubai – Emaar
3. Lighting Installation Works at Dubai Mall Night Safari & Super Croc – Emaarr
4. Barisol Lighting Installation Works at Dubai Mall Food Court LG – Emaar
5. Lighting Installation Works at Dubai Mall Metro Link Bridge Corridor & Retail – Emaar
6. Lighting Installation Works at Souk Al Bahar, Dubai - Emaar
7. Lighting Installation Works at Souq Al Manzil – Emaar
8. Lighting Installation Works at Dubai Aquarium and Underwater Zoo – Emaar
9. Lighting Installation Works at Pier 7 – Marina Mall – Emaar
10. Lighting Renovation Works at Dubai Mall – Gold Souq – Emaar
11. Landscape Light Installation Works at Dubai Mall Entry Area – Emaar
12. Lighting Installation Works at WIP Entrance – Dubai Mall – Emaar
13. Ferrari World, Abu Dhabi
14. Lighting Installation Works at Ajman Police Head Quarters
15. Landscaping Light Installation Works at Phase 1 – Citywalk (M/S – Meraas Development)
16. Landscaping Light Installation Works at Phase 2 – Citywalk (M/S – Meraas Development)
17. Landscaping Light Installation Works at Phase 3 – Citywalk (M/S – Meraas Development)
18. Lighting Installation Works at Living Planet Museum, Dubai (M/s Meraas Development)
19. Lighting Installation Works at IMG Worlds of Adventure, Dubai
20. Lighting Installation Work at Filful Restaurant, Box Park (M/s Filful Restaurant)
21. Lighting Installation Work at Deira City Center (M/s Al Futtaim Group)
22. Lighting Installation Works at MAF Majlis, Deira (M/s Al Futtaim Group)
23. Lighting Installation Works at Meraas Outlet Mall, Dubai
24. Landscape Lighting Installation Works at The Beach, JBR, Dubai
25. Lighting Installation Works at The Galleria Shopping Mall, Abu Dhabi
26. Lighting Installation Works at Meydan Jumeirah, Dubai
27. Lighting Installation Works at Khalifa Villa – Phase 1
28. Lighting Installation Works at Al Fattan Crystal Tower - JBR
29. Facade Lighting Fixture Installation works at Al Wasal Plaza Expo 2020
30. Facade Lighting Fixture Installation works at Museum of Future Dubai
31. Facade Lighting Fixture Installation works at Bee'ah Headquarters
32. Facade Lighting Fixture Installation works at Al Fattan Tower
33. AWR Mankhool Mixed Use Development
34. Lighting Fixture Installation Works at Mubadala HQ Retrofit Project
35. Facade Lighting Installation Works at Wasal 2020 Tower Dubai
36. Facade Lighting Installation works at Abudhabi Global Market Square
37. Facade Lighting Installation Works at Mubadala Tower
38. Rectification of Lighting Works at DIFC Gate Avenue
39. Lighting Installation Works at Qasar Al Sarab Resort





## JTS HEAD QAUARTER, DUBAI





# BURJ KHALIFA



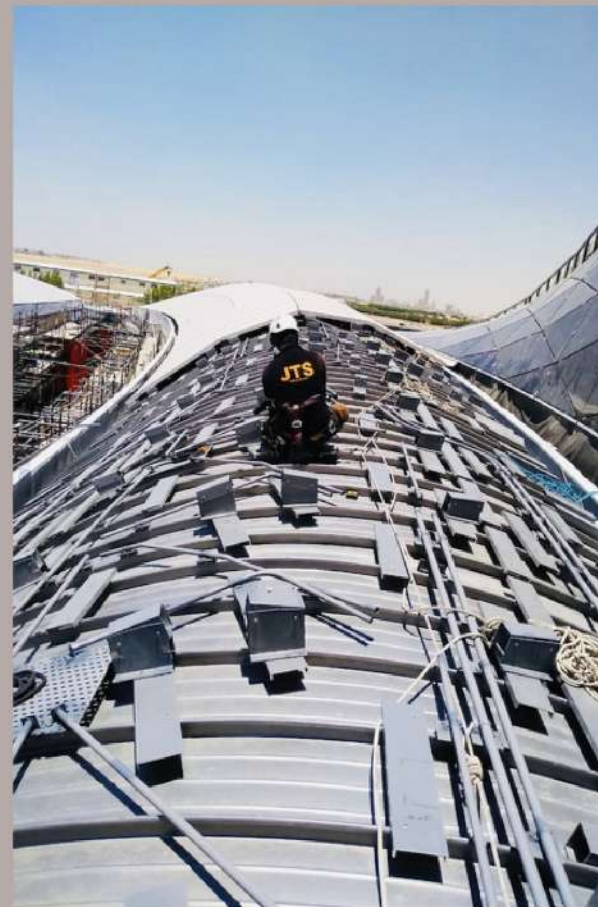
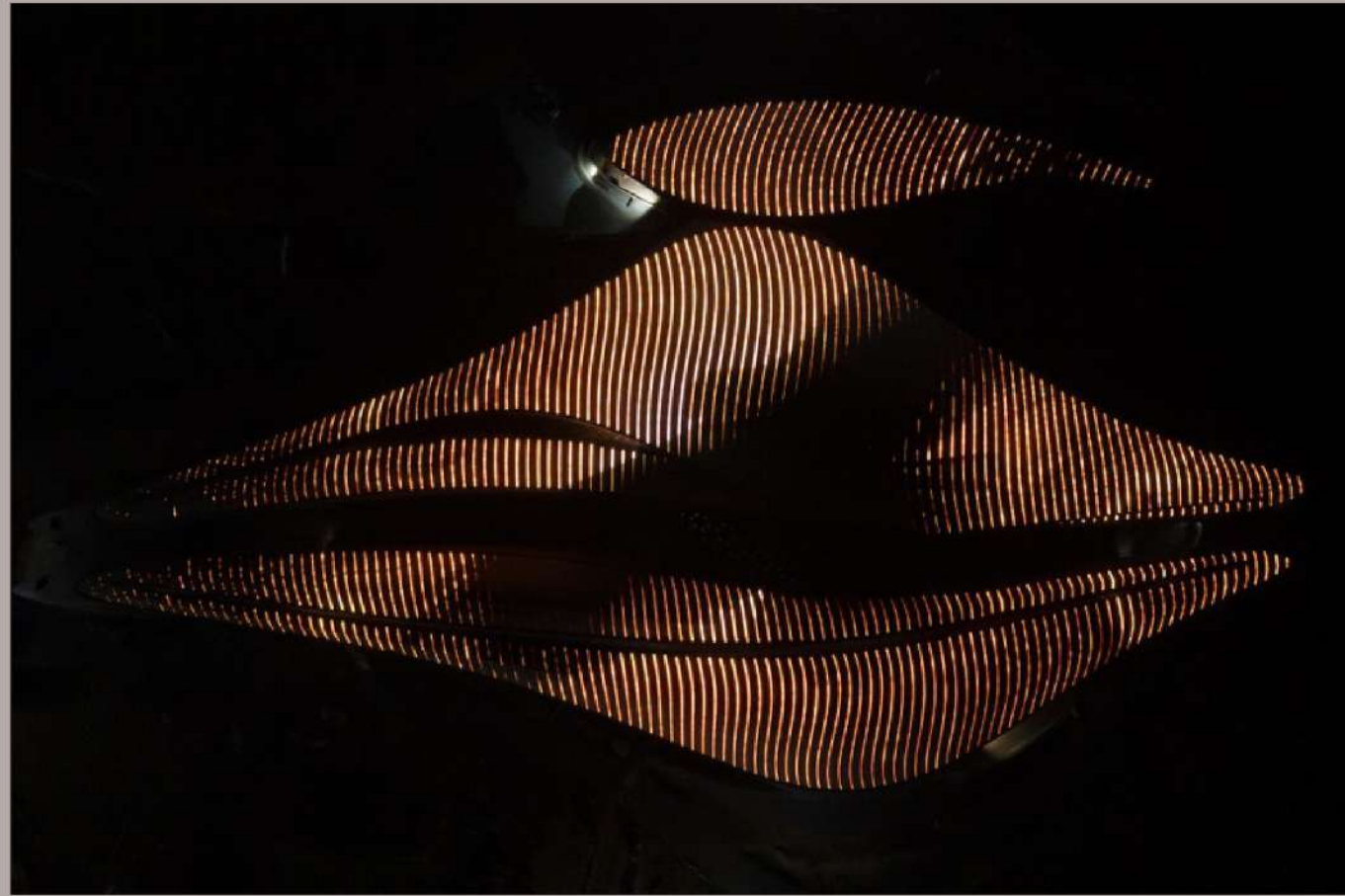


# BEE'AH HEADQUARTERS

SACO

JTS Johnson  
Technical  
Services

BS LIGHTING  
SOLUTIONS



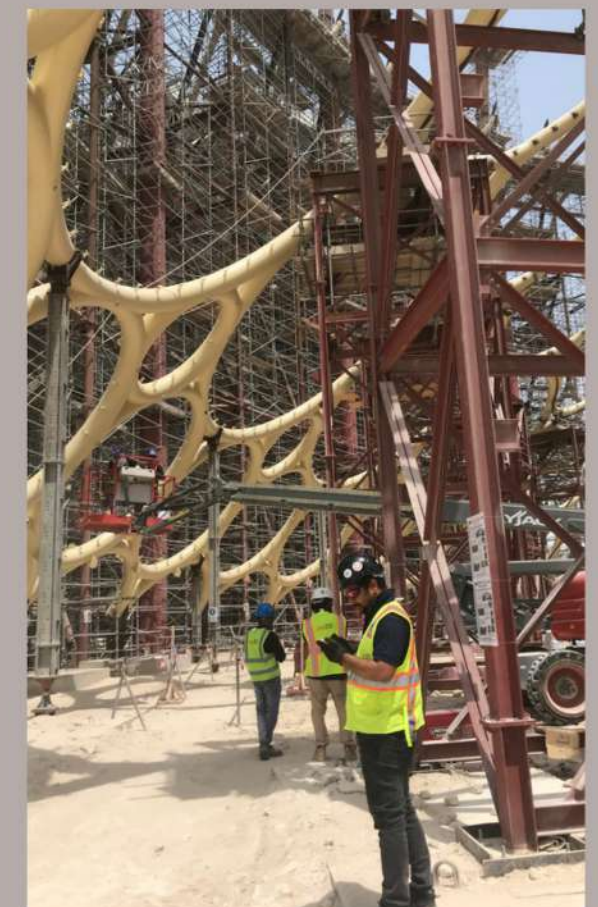
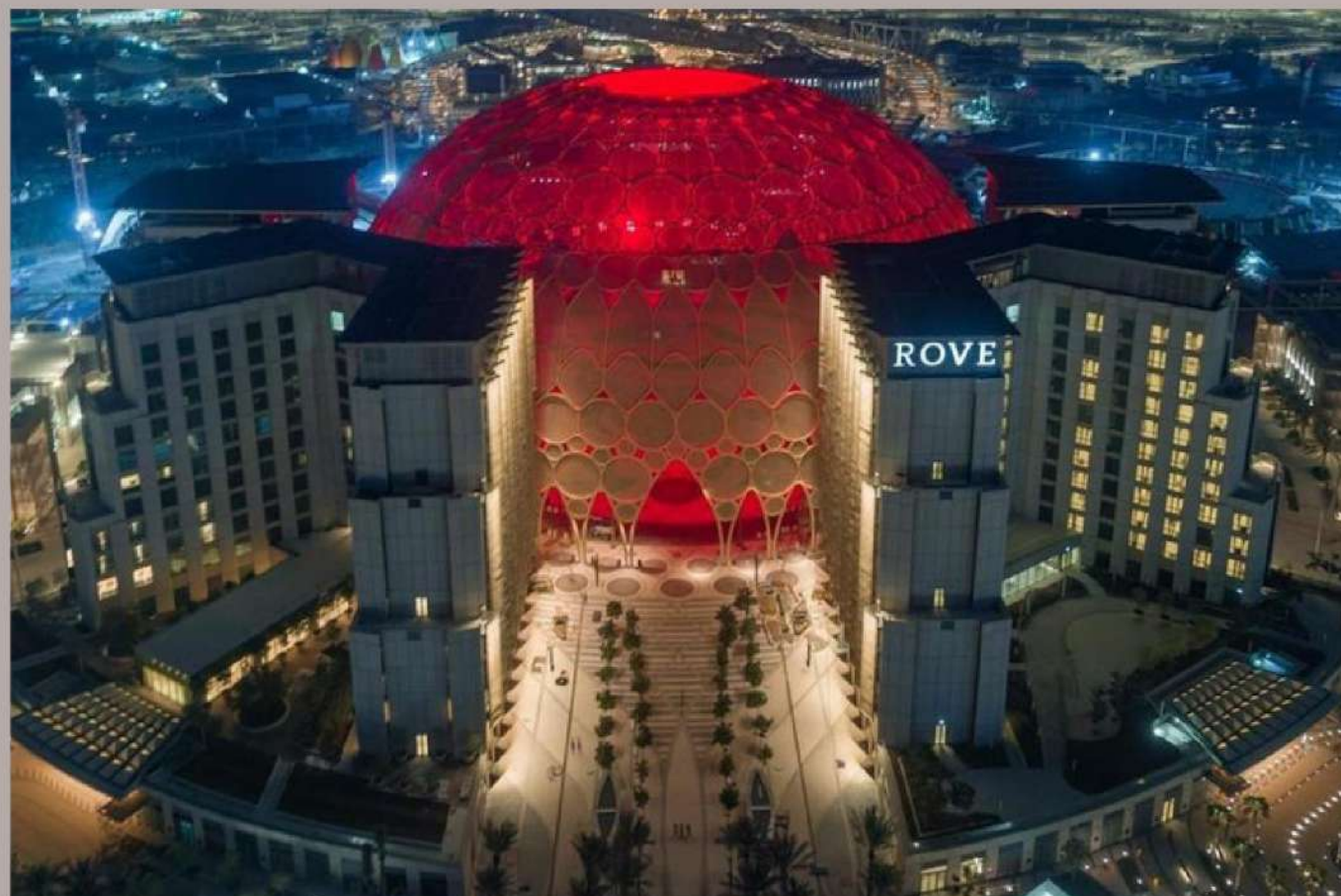
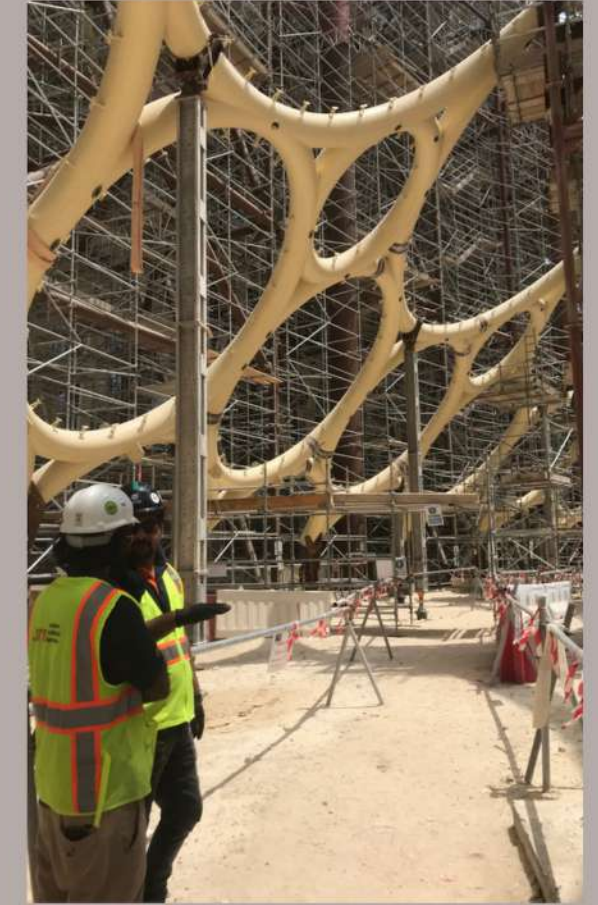


# AL WASL PLAZA EXPO 2020

**JTS** Johnson  
Technical  
Services

**SACO**

**BS LIGHTING**  
SOLUTIONS





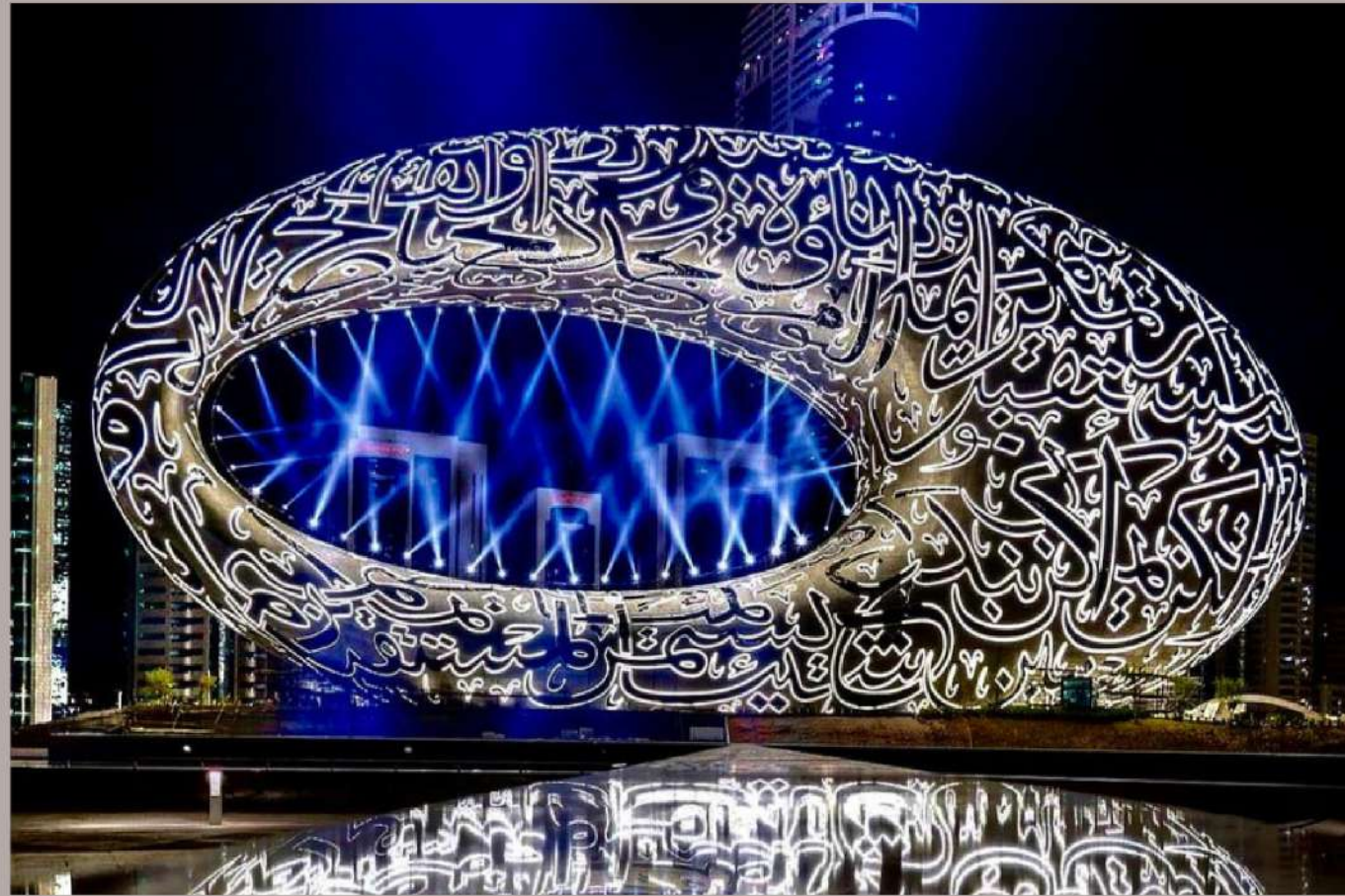
AWR MANKHOOOL MIXED USE DEVELOPMENT



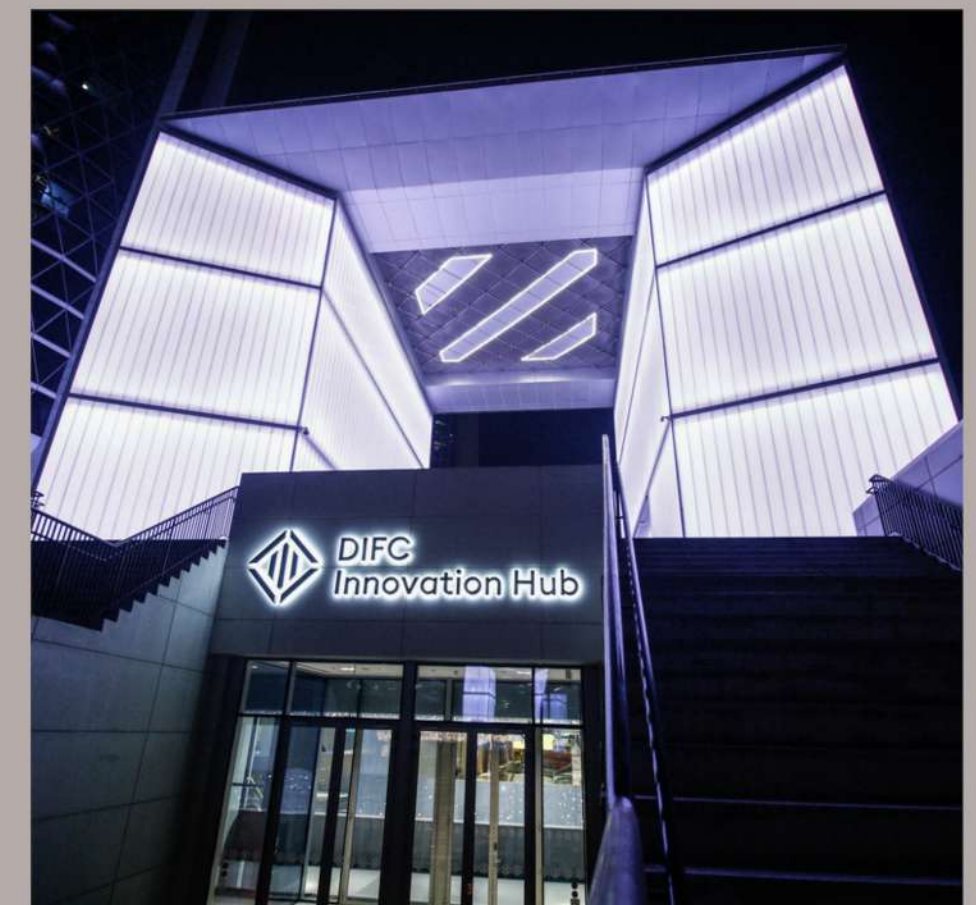
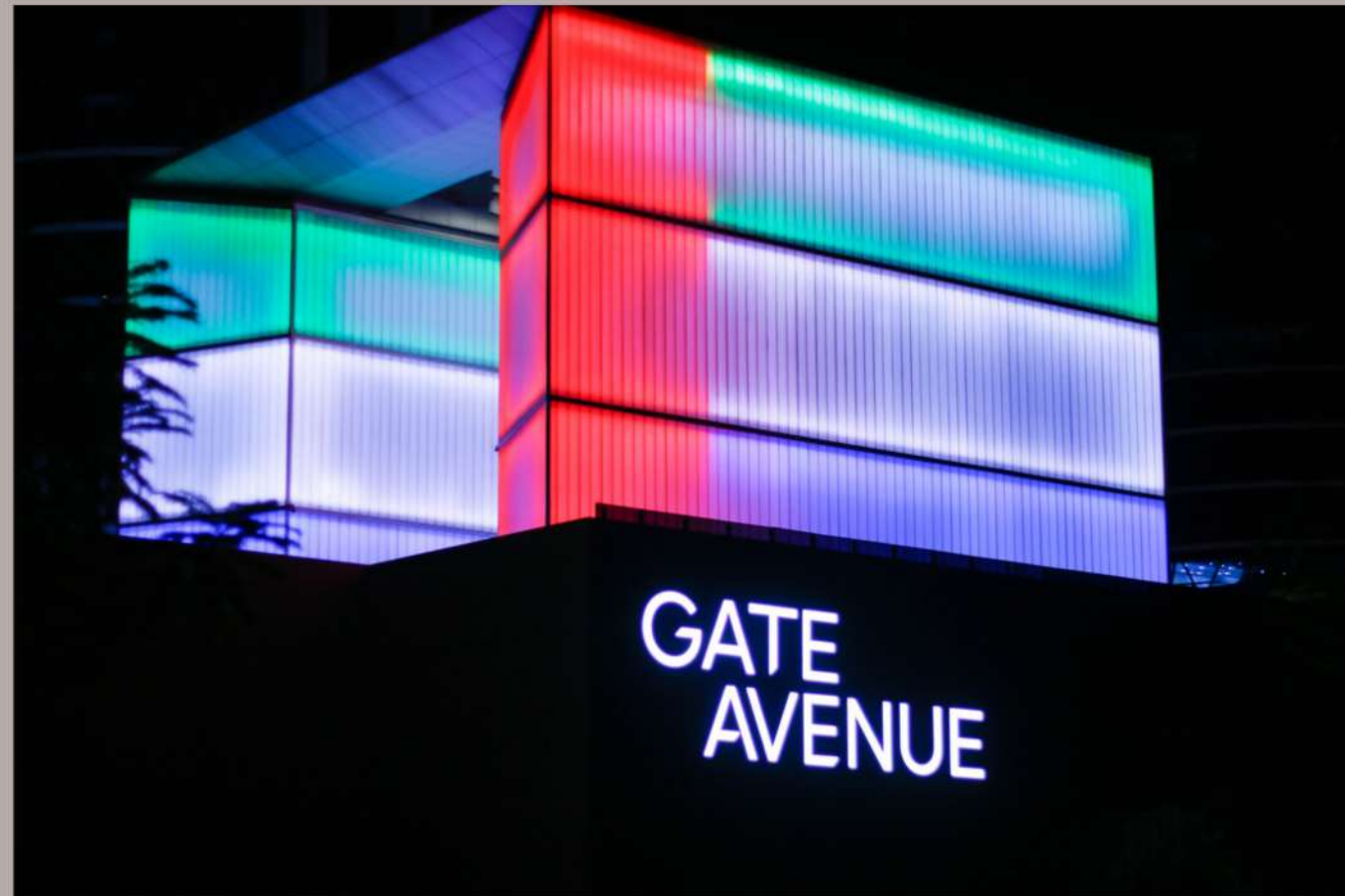
Mar 11, 201





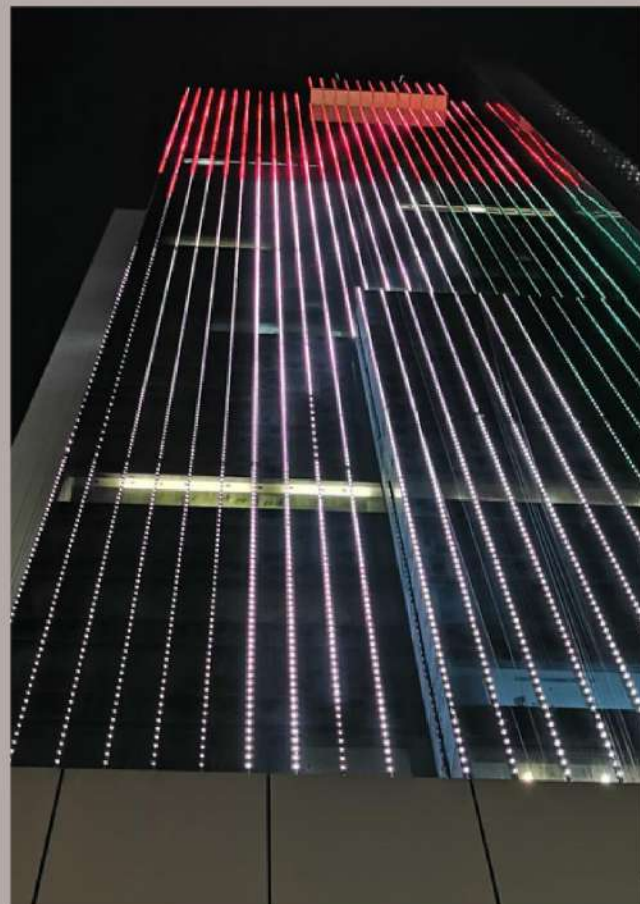
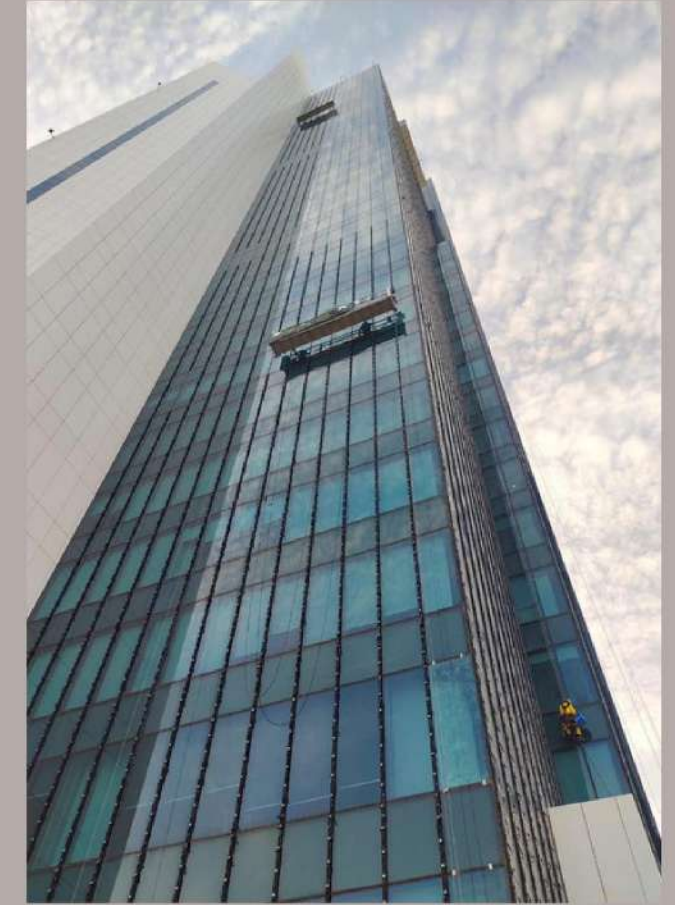








# MUBADALA TOWER





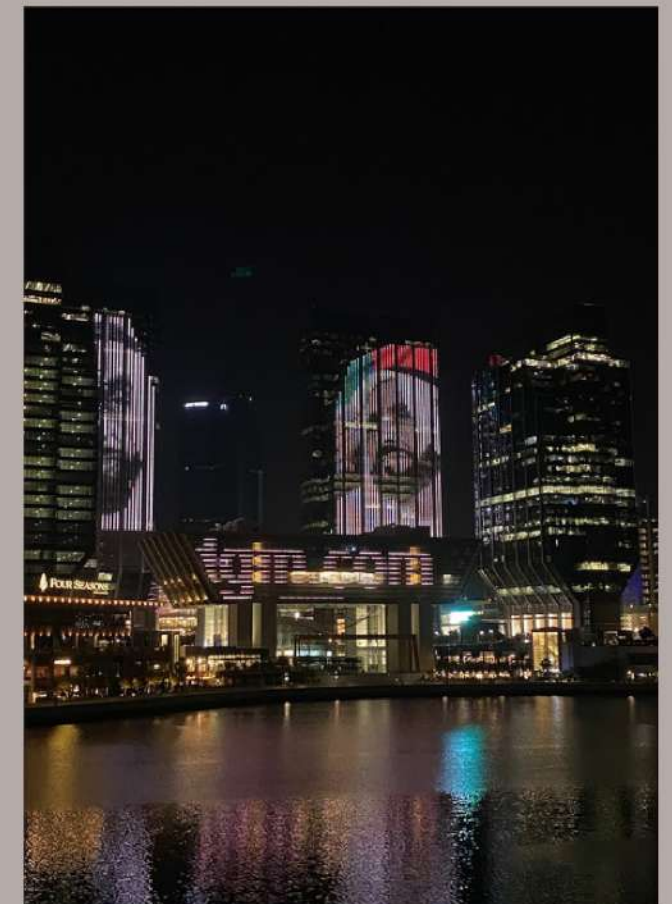
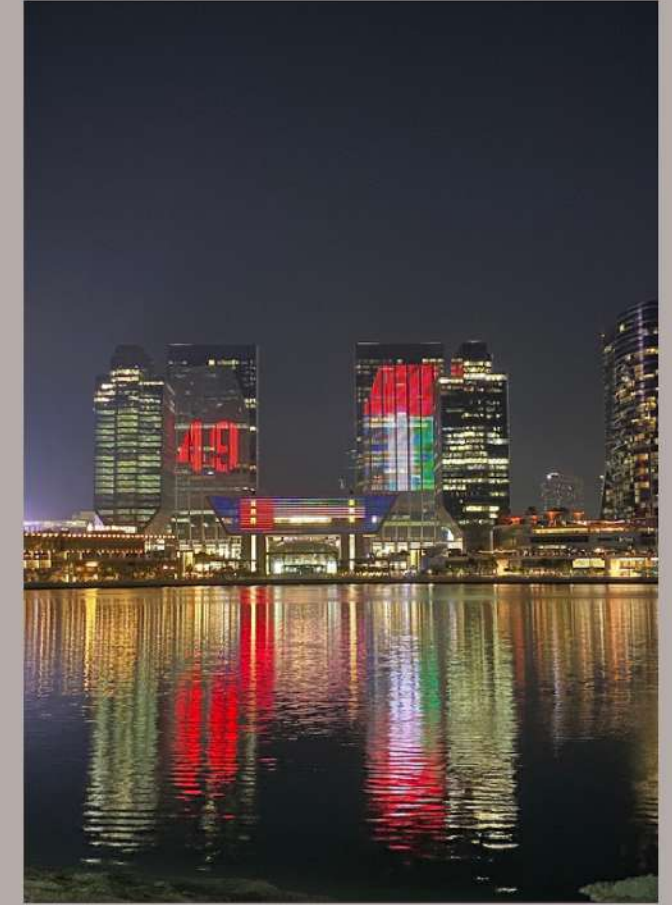


## ADGM (ABU DHABI GLOBAL MARKET)

traxon

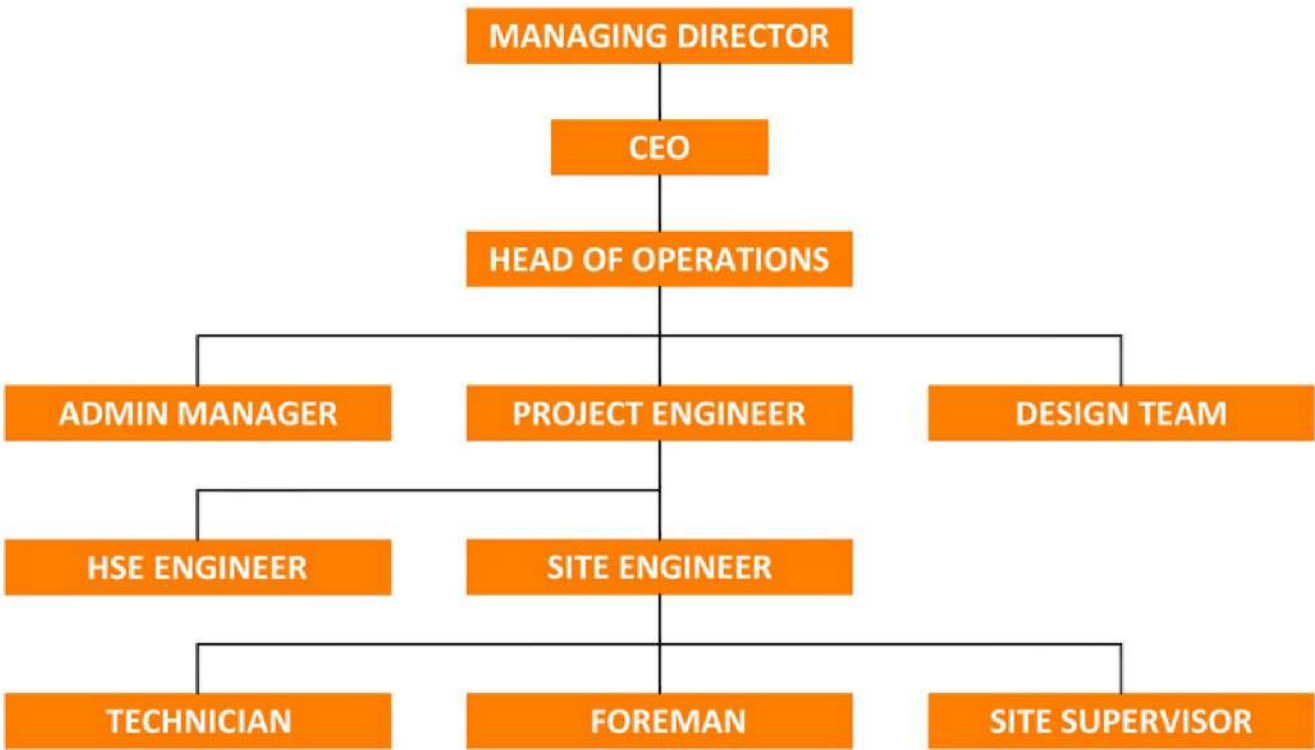
debbas

**JTS** Johnson  
Technical  
Services





ORGANIZATION CHART





## KEY PERSONS



Bill Johnson  
Managing Director



Baiju Chaliyil  
CEO



Hazin Mohammed  
Head of Operations



Sania Shahid  
Admin Manager



Rila Khairun  
Designer



Abdul Sagheer  
Designer



Irshikesh Ramakrishnan  
Administrator



Ramesh Chandran  
Project Engineer



Ken Philipose  
Project Engineer



Nisajudeen Therath  
Project Engineer



Aswin Johnson  
Project Engineer



Akhil Cherool  
Project Engineer



Jonathan  
HSE Engineer



John Thaimuriyil  
Site Engineer



Selvendran Velraj  
Site Engineer



Ashok Kumar  
Supervisor



Rajeevan Pillai  
Supervisor



Kokkat Lonappan  
Job Supervisor



Shyju Kanjany  
Supervisor



Sajith Thiruthimmal  
Project Coordinator



Aby Joseph  
Foreman



Ullas Uthaman  
Foreman





## GLOBAL EXPANSION ALERT

Dear Business Partners as one of the Leading Lighting and Lighting control installation company we are going to spread our branches through out 3 Global Regions.

We are taking this Opportunity to Thanking all of you for the support you all given to us in UAE and now we are expecting the same Globally

- INDIA - Bangalore (HQ), Delhi & Mumbai
- KSA - Riyadh
- Egypt - Cairo



HEAD QUATERS UNITED  
ARAB EMIRATES - DUBAI

